

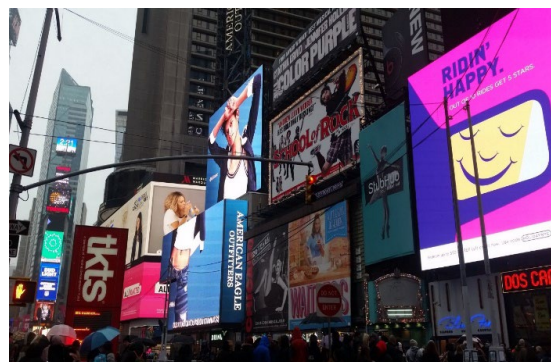
## JOE 2025 PRE-TRIP WeEve2-Walking Tour of Times Square at Night

<b>Day:</b> Wednesday, August 27, 2025	<b>Start Time:</b> 9:00 PM	<b>End Time:</b> 11:00 PM
<b>Leader:</b>	<b>Co-Leader:</b>	<b>Limit:</b> 32
<b>Transportation:</b> see below		Location: Times Square
<b>Tour Cost:</b> Free	<b>Travel Distance:</b> 1.5 miles	<b>Travel Time:</b> 45-90 minutes

### WeEve2-Walking Tour of Times Square at Night

We will take a self-guided walking tour of Times Square, the Crossroads of the World. Our tour will include the Theater District, the “Great White Way,” and Broadway.

Leaving the Circle Line, walk uptown (turning left as you walk away from the river) on the Hudson River Greenway to the USS Intrepid at W. 46th Street, where we will stop for a photo op.



Bright lights, award-winning Broadway shows, window shopping, diverse restaurants, and eclectic performers are among the top reasons to explore this famous spot. Add one-of-a-kind people-watching to the list, and you will find endless things to do there.

Walk east on W. 48<sup>th</sup> Street away from the river (heading down in the numbers of Avenues) to Broadway. About a mile after the cruise, we turn right onto Broadway; we enter the heart of Times Square and its razzle, the dazzle of lights and billboards. Eat the best-glazed doughnuts from [Krispy Kreme](#) (best when they are still hot and freshly made). Check out some unique flavors in the three-story-tall store filled with candy in [M&M's Store](#). See the largest chocolate bars around at [Hershey's Chocolate World](#). Stop to watch an impromptu on-street performance. Pass the famous TCKTS booth in the “heart of Times Square,” where half-price tickets to Broadway Shows may be purchased. Pass iconic theaters where many Broadway stars performed, such as the J Barrymore Theater (Broadway & 47<sup>th</sup> Street), Lunt Fontaine Theater (Broadway 46<sup>th</sup> Street), and Paramount Theater at Broadway and 44<sup>th</sup> Street. Look up at the Times Square Building on Broadway at 43<sup>rd</sup> Street to see the [Times Square Ball](#) lit up by LED lights above and viewed by millions each year. We will end the tour by taking the subway downtown to Penn Station at 34 Street and then transferring to an NJ Train for the ride back to our hotel in Elizabeth.

- Wear comfortable walking shoes. Dress appropriately for the weather.
- 9:00 pm ~ 11:00 pm
- Transportation: Walking to Times Square, then MTA and NJ Transit to return to the hotel.
- Transportation (You can take public transit or walk to Penn Station):
  - No fees collected during registration. Pay as you go.
  - Optional [NYC Metro M50](#) bus ride from Circle Line to W 50 ST/7 AV. \$3.25
  - Optional [Subway 1/2/3](#) from Times Square/42 St to Penn Station. \$3.25
  - [NJ Transit train](#) from NYC Penn Station to North Elizabeth \$8.30 Adult / \$3.70 [Senior \(+62\)](#)

**JOE 2025 PRE-TRIP WeEve2-Walking Tour of Times Square at Night**

**Leader’s Responsibilities**

- Run the meet the leader meeting on Tuesday evening. Get a count of how many people will be in your group. This may change.
- Talk about [safety when traveling in NYC](#), especially Times Square.
- Once off the boat, gather your group. Get a good count of how many people are in your group.
- Appoint a sweep for the first leg of your travels.
- Once you arrive at 7th Ave or Broadway, group up and set a time to meet again at the Subway Station. Provide clear directions on how to get to Penn Station and return to the hotel if someone gets separated from the group.
- Suggest handing out slips of paper or business cards to share your name and phone number with your group.
- We will use [WhatsApp](#) to communicate between groups and chair people and keep everyone informed about their status during the day and if any issues arise. Please install this app on your phone.

**Logistics to get back from Circle Line Cruise to North Elizabeth Train Station and the Crown Plaza Hotel**

1. Allow 40- 90 Min to walk two miles from Circle Line Cruises to Times Square/42 St Subway Station via 48<sup>th</sup> Street (pending stops).
2. Please allow 15 Minutes to get from Times Square/42 St Subway Station and NJ Train via the 1/2/3 train. There is a subway train every 10 minutes or less.
3. Once you get to New York Penn Station, purchase your NJ Transit Train to North Elizabeth Station. This will take a few minutes.
4. The NJ Transit train will take approximately 26 minutes to get from NY Penn Station to North Elizabeth Station
5. Once at North Elizabeth Station, it is a 7/10 mile walk or drive back to the hotel.

The timetables below are as of 11/10/24 and are subject to change; check the [NJ Transit Site](#) for live updates.

Train Line	New York Penn Station	North Elizabeth Station	# of Minutes of travel	Difference in time (h:mm) between previous train	Bus #112 towards Roselle/Clark			
					New York Port Authority	Get off at North Ave + Dowd Ave - Stop ID: 28718 near hotel	Duration of travel	Difference in time (h:mm) between previous bus
New Jersey Coast	6:18 PM	6:48 PM	30		5:06 PM	5:26 PM	0:20	
Northeast Corridor	6:47 PM	7:14 PM	27	0:29	5:26 PM	5:46 PM	0:20	0:20
New Jersey Coast	7:24 PM	7:49 PM	25	0:37	5:46 PM	6:06 PM	0:20	0:20
Northeast Corridor	7:43 PM	8:12 PM	29	0:19	6:07 PM	6:25 PM	0:18	0:21
Northeast Corridor	8:07 PM	8:35 PM	28	0:24	6:25 PM	6:57 PM	0:32	0:18
New Jersey Coast	8:41 PM	9:09 PM	28	0:34	7:00 PM	7:32 PM	0:32	0:35
New Jersey Coast	9:38 PM	10:08 PM	30	0:57	7:15 PM	7:32 PM	0:17	0:15
Northeast Corridor	10:07 PM	10:35 PM	28	0:29	7:45 PM	8:02 PM	0:17	0:30
New Jersey Coast	10:23 PM	10:52 PM	29	0:16	8:48 PM	9:04 PM	0:16	1:03
Northeast Corridor	11:06 PM	11:34 PM	28	0:43	9:48 PM	10:04 PM	0:16	1:00
New Jersey Coast	11:18 PM	11:46 PM	28	0:12	10:48 PM	11:04 PM	0:16	1:00
New Jersey Coast	12:05 AM	12:32 AM	27	0:47	11:48 PM	12:04 AM	#VALUE!	1:00
Northeast Corridor	12:14 AM	12:41 AM	27	0:09	*Last Bus out of NYC is 11:48 PM			
Northeast Corridor	1:22 AM	1:49 AM	27	1:08				

**The last train leaving NY Penn Station leaves at 1:22 am. DO NOT MISS IT**

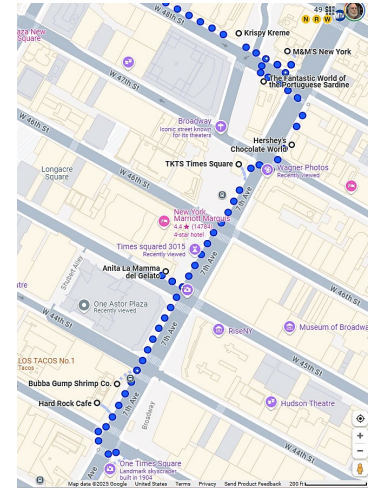
## JOE 2025 PRE-TRIP WeEve2-Walking Tour of Times Square at Night

### Plan:

Walk from Circle Line Cruise uptown to 48th Street, passing the Intrepid along the way. Then turn right onto 48<sup>th</sup> Street to Broadway. Then, left on Broadway. Head down to 42nd Street, stopping at places along the way. Remember to be at Penn Station by 1:00 am to catch the last train back to the hotel.

I recommend Disney, M&M Store, and Krispy Kreme (for dessert). Nothing beats a freshly made Krispy Kreme glazed doughnut. You might be lucky to see them being made right before you.

Note: Do not buy items from these stores unless you want to pay triple the price elsewhere. These stores have bigger displays than any other location. However, some merchandise is not sold anywhere else and is fun to look at.



### Optional stops in Times Square along the way:

[Krispy Kreme](#) 1601 Broadway (Corner of Broadway and 48<sup>th</sup> St)

[M&M's Store](#), 1600 Broadway (48<sup>th</sup> St in between Broadway and 7<sup>th</sup> Ave)

[The Fantastic World of the Portuguese Sardine](#), 1592 Broadway/ 48<sup>th</sup> St

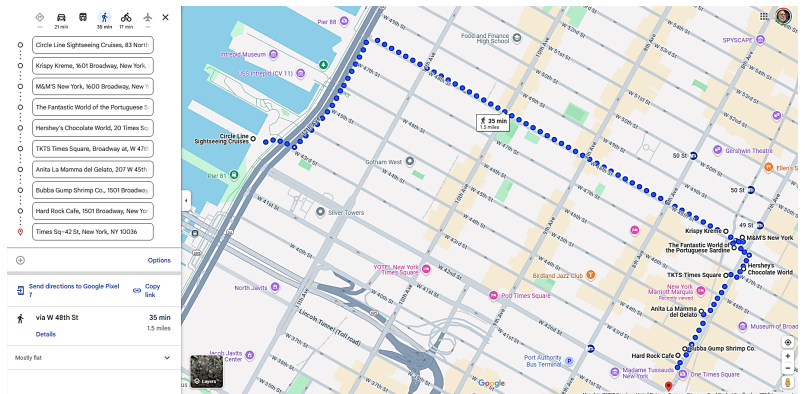
[Hershey's Chocolate World](#), 701 Seventh Avenue (Near 47<sup>th</sup> St). See some huge chocolate bars.

[Sephora](#), 1535 Broadway (near 46<sup>th</sup> St)

[Swatch](#), 1535 Broadway (Near 45<sup>th</sup> St)

[Bubba Gump Shrimp Co.](#), 1501 Broadway, New York, NY 10036 (near 44<sup>th</sup> St)

[Hard Rock Cafe](#), 1501 Broadway (near 43<sup>rd</sup> St)

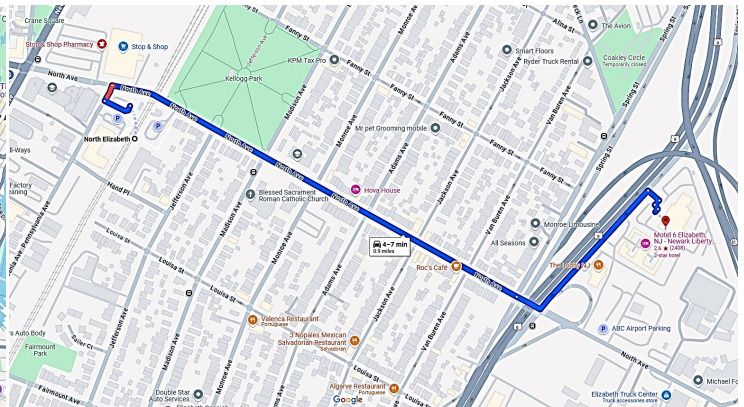
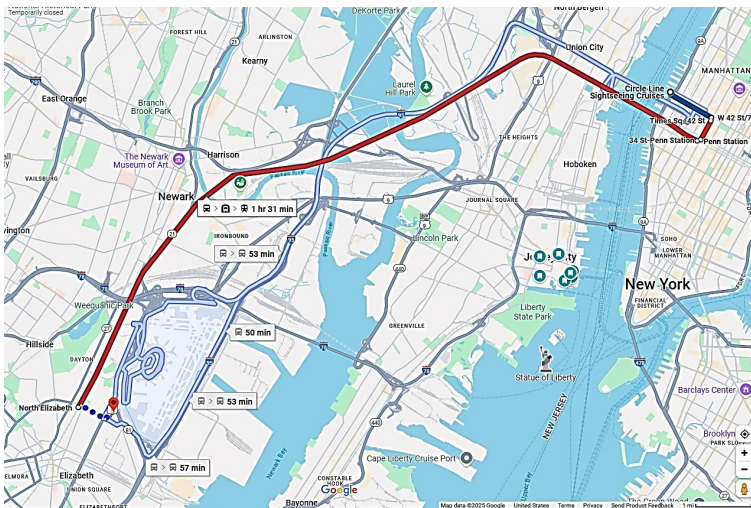


- Agree as a group to meet at 42<sup>nd</sup> Street and Broadway at XX time and then let the group wonder.
- Be aware that the [people dressed up as characters can get aggressive](#) and WILL WANT \$\$ for any pictures taken with them.
- Be aware of pick pocketers. They LOVE tourists. Keep your wallet and bags secure. DO NOT put it in your back pocket. Separate your cash from your wallet.

## JOE 2025 PRE-TRIP WeEve2-Walking Tour of Times Square at Night

### Directions from Circle Line Cruise to the Crown Plaza Hotel Newark Airport Via Train

- 1) Get to [42nd Street Subway station](#):
  - a) From the Circle Line Cruise Line, walk one mile to 42nd Street/Times Square Subway Station or add a mile to the crosstown heading to 48th Street past the Intrepid on 12<sup>th</sup> Ave.
  - b) Take the M42 bus to 7th Ave. Then, Find the 42nd Street/Times Square Subway Station entrance on the corner of 42nd Street and 7th SE.
- 2) Take any 1/2/3 train south to [Penn Station](#) (the Cost is \$3.25, not included in the base price).
  - a) You can take the next NJ Transit Northeast Corridor or NJ Coast train out of NY Penn Station, as long as they are not express trains. The cost is \$8.30 / \$3.70 [Senior +62](#) (not included in the base price).
  - b) Click [HERE](#) to determine the schedule.
  - c) There is a train leaving approximately every 30 to 45 minutes.
  - d) **The last train leaving NY Penn Station leaves at 1:22 am. DO NOT MISS IT.**
  - e) Arrive at North Elizabeth Trian Station after four stops / 26 to 30 minutes.
- 3) Once at North Elizabeth Trian Station, Walk/Drive 7/10 mile:
  - a) Go down to the parking lot and find the street. Turn right on North Avenue, uphill away from Stop & Shop.
  - b) Follow North Avenue ½ Mile to Rt. 9 / Spring Street.
  - c) Cross over Rt. 9 / Spring Street (major road) from the right side of North Avenue following the crosswalks.
  - d) Follow the walkways to turn left on Spring Street, following the direction of the traffic.
  - e) Crown Plaza is the third property down the street after The Lobby (Night Club) and Motel 6.



Walk from train to hotel.

Train from NY Penn Station to North Elizabeth Station