

Day: Saturday	Start Time: 9:15 am	End Time: 1:00 pm
Co-Leader:	Co-Leader:	Limit: 15 people
Transportation:	Driver:	Radios: 0 / First Aid Kit 0
Fees: \$41 / \$39 Seniors (62+)	Travel Distance: 40 Miles R/T	Travel Time: 50 Min R/T

Lake Wallenpaupack Scenic Boat Tour and Shohola Falls

We will start by stopping to view [Shohola Falls](#). This magnificent waterfall, seventy-five feet wide and fifty feet tall, showcases nature's breathtaking power. The constant flow of water cascades dramatically, leaving spectators in awe, even during drier seasons when neighboring falls may run low.

Afterwards, we will experience a breathtaking 50-minute guided tour of Lake Wallenpaupack. During this tour, you will discover the rich history of this stunning lake region and learn why it has become a popular year-round destination. Marvel at the Lake Wallenpaupack Hydroelectric Dam, observe local wildlife such as Ospreys, Blue Herons, and Bald Eagles, learn about the various fish species that inhabit the lake, explore the Shuman Point Natural Area, and visit Epply Island, one of the four islands on the lake. The tour is led by a fully qualified captain/tour guide and includes life jackets for your safety.

Lake Wallenpaupack is a freshwater lake located in northeastern Pennsylvania. It is the third-largest lake in the state, boasting fifty-two miles of shoreline, an impressive length of thirteen miles, and depths up to sixty feet. Established in 1926 by the Pennsylvania Power & Light Company (PP&L) for hydroelectric power and flood control, it is now recognized as a premier recreational destination in the Pocono Mountains. Please note that the Scenic Boat Tour will cover approximately one-third of the lake during the scheduled time.

- Bring a sweater in case of a chill on the water, and a snack
- Pack lunch at breakfast to bring with you
- Cost: \$41/ \$39 Seniors (62+)
- Costs include vendor fees, tax, 10% tip, \$18 transportation fee, 10% MOCA administration, and registration fee.
- Time: 9:15 am ~ 1:00 pm
- Limit: 15 People
- Round Trip Driving: 38 Miles / 47 Min
- Vehicle: Passenger Van or Personal Cars (TBD)
- [YouTube of the boat tour](#) / [Western Viewing of Shohola Falls Trails](#) / [Description of Shohola Falls](#)

Logistics:

- Pack lunch during breakfast.
- 9:15 am Depart from camp.
- 9:15 am – 9:25 am Travel to Shohola Falls
- 9:25 am – 10:15 am View Shohola Falls
- 10:15 am – 10:30 am Travel from Shohola Falls to Wallenpaupack Scenic Boat Tour
- 10:30 am – 11:00 am [Check-in](#), Bathroom, and Load Boat
 - Check in at least 20 minutes before the tour. DO NOT BE LATE
- 11:00 am – 12:00 am Boat Tour
- 12:00 am – 12:15 am Bathrooms, Load Car
- 12:15 am – 12:45 pm Travel from Hawley to Camp Nah-Jee-Wah

Shohola Falls

The eastern view of the Falls. The Walk down to the falls is short but rocky and steep. Due to recent rain, the trail can be muddy, and in high water, the spray of the falls may wet you.

Shohola Falls is located along Route 6, 10 miles northwest of Milford, Pennsylvania, in State Game Lands 180. State Game Lands 180 is an 11,000-acre protected area dominated by Shohola Marsh Reservoir and its surrounding marshes.

Shohola Creek flows into the lake and then out at the dam on the lake's northeastern corner. Shohola Falls is just below this dam. The dam does not affect the waterfall's flow, as it often flows during the drier months.

This constant flow of water travels over Shohola Falls, an impressive waterfall seventy-five feet wide and fifty feet tall. It is incredibly powerful and beautiful. The sheer amount of water that flows over this waterfall, even when others in the area are low, is awe-inspiring.

The Shohola waterfalls can be viewed from three sides thanks to a 90-degree turn that the creek makes just below the bottom of the falls. The best views are from the ledge directly in front of the waterfall, giving you a head-on view of the waterfall from about twenty feet above the water.

If you decide to go out on this ledge, use extreme caution. It is only a few feet wide in places and slants slightly downward to the water. The ledge is frequently wet with spray from the waterfall, making it quite slick in places, especially when it gets icy in the wintertime.

The ledge can be accessed from the eastern side of the waterfall. This area offers the quickest access to Shohola Falls and the ability to see a side waterfall that flows when water levels are higher on the main waterfall.

The opposite side of the falls can be accessed from a parking lot directly off Route 6. From here, it is a short walk along an open field to a trail that leads you along the water to several stone observation points. While it takes a bit longer to get to the waterfall from here, these observation areas provide nice vantage points for those who do not want to get too close to the water.

How to Get to Shohola Falls

Shohola Falls is located along Route 6 in Pike County, Pennsylvania, ten miles west of Milford. After following directions to Shohola Falls, PA, there are two parking options for seeing this waterfall.

The eastern side of the waterfall can be reached from a parking area off Brooks Road, just after the bridge, if traveling east. While this road might look like a private road, it also leads to the state game land's parking area. The coordinates for this parking area are 41.390504, -74.969160. The directions below bring you to this location.

Follow the parking lot trail that heads downstream for just a minute or two. To access the narrow ledge, follow the trail past the large rock as the trail goes downhill and then uphill to the ledge. Again, if you go out on the ledge, please use extreme caution, especially if you get wet.

To reach the western side of Shohola Falls, turn just before the bridge over the creek (if traveling east) and park in the state game land's parking area immediately after it to your left. When you enter the parking area, park in the far-left corner of the lot. The coordinates for this parking area are 41.391771, -74.971643.

From there, walk through the open field towards the lake and the dam. Near the water's edge, you should see a trail heading into the forest and downstream. Soon, you will come to a stone wall and two observation areas.

Boat Tour Vendor

Wallenpaupack Scenic Boat Tour 2487 US-6, Hawley, PA 18428 | 570-226-3293/ Fax: 570-226-5611

info@wallenpaupackboattour.com | <https://wallenpaupackboattour.com> |

[Facebook](#) | [TripAdvisor](#) 5 Star Rating with 394 Reviews |

A Partner of **East Shore Lodging and Wallenpaupack Boat Tours & Rentals** 2487 Route 6, Hawley, PA 18428 | 570-226-3293

www.eastshorelodging.com

Contacts: **Bridget & Steve Gelderman**

To avoid being considered a no-show, check in at the Tour Boat ticket office (Located at East Shore Lodging) 20 minutes before departure time.

WHAT'S INCLUDED: An Orange Type II jacket is provided; however, please bring your own life jacket if you are more comfortable with it.

ARRIVALS: Please arrive 20 minutes before departure to check in. The property has an on-site gift shop, ice cream, and pizza. Outdoor portable restrooms are only on-site.

MINIMUM: There is a minimum of four people for the tour to depart. If we are not able to book a MINIMUM OF 4 SEATS, the boat will not go out. We will issue a full refund if a ride is canceled due to this minimum.

WEATHER: A full refund will be provided if the vendor cancels the ride due to weather. A full refund will also be provided if you are out on the water for less than 25 minutes. However, no refunds will be provided if you are on the water for over 25 minutes and the vendor must cut the tour short.

Our rental office is open 8 a.m.- 5 p.m. daily. Do not leave a voicemail for cancellations.

CHECK IN: Check in at the Tour Boat office, which is located inside East Shore Lodging. **Check in 20 MINUTES PRIOR TO YOUR TOUR TIME.** We will provide you with a ticket. We will not hold the boat if you are late. There are NO exceptions, and you will forfeit your seats without the ability to get on the subsequent tour. Leave your group enough time to get to our destination.

WHAT TO BRING: This tour is on an open-air pontoon boat, always about 10 degrees cooler on the water. Bring a sweater. In the fall and spring, bring a blanket, too. The boat has a Bimini top to protect from the sun in the summer months. Wear sunscreen.

NO PETS ALLOWED: Guide dogs only.

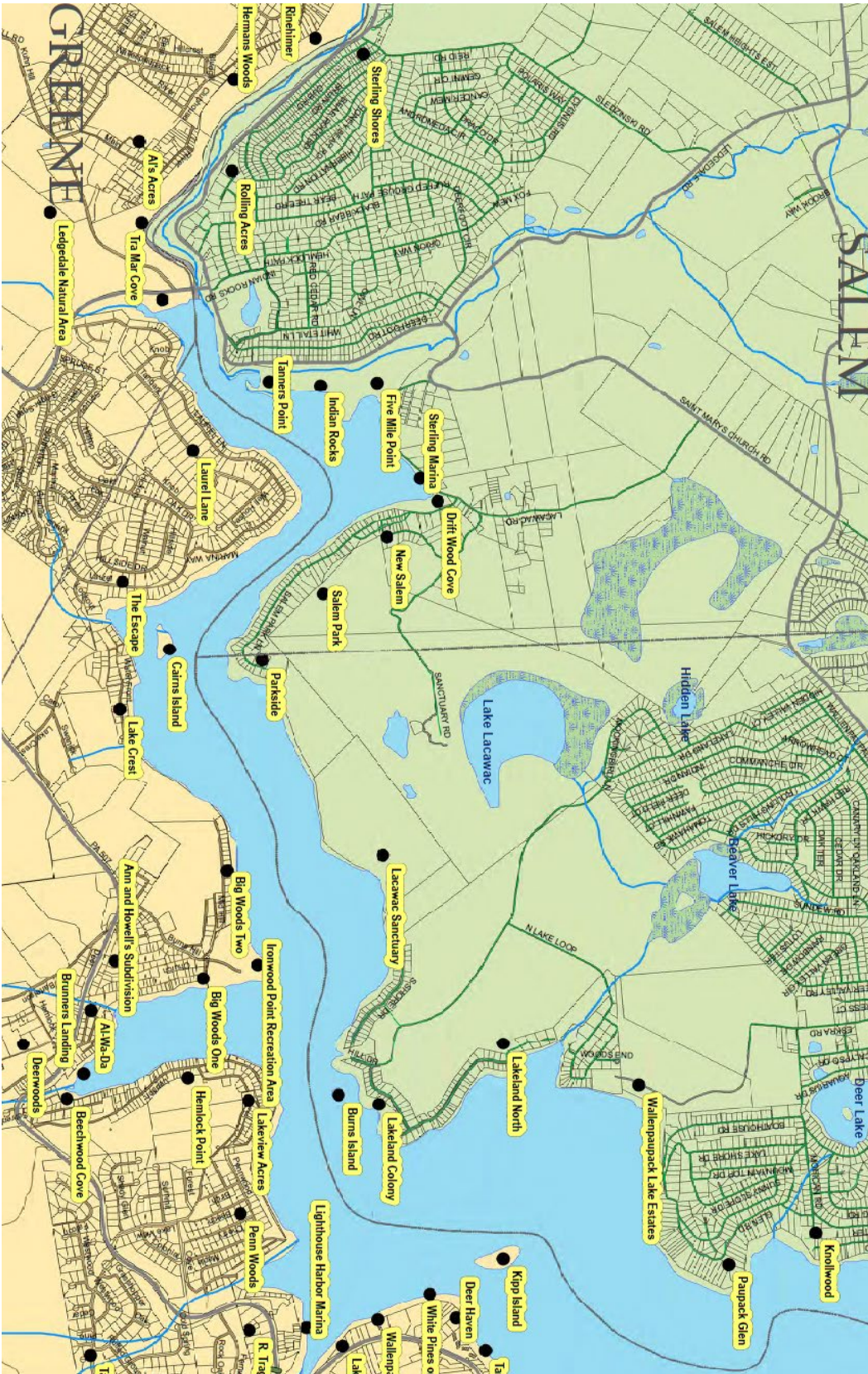
CONTACT: To amend your reservation, please get in touch with us at 570-226-3293 between 8 am and 5 pm.

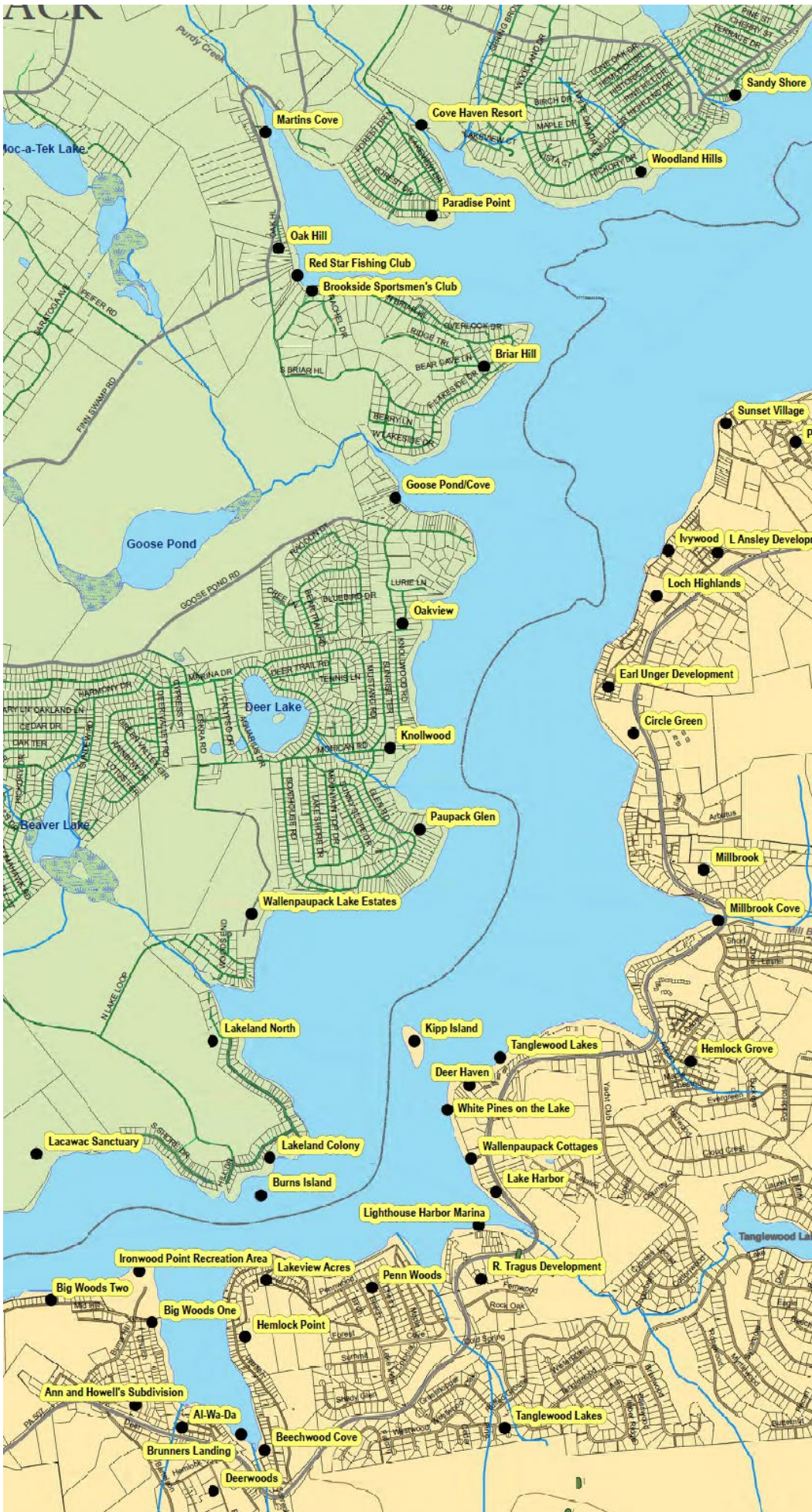
VENDOR CANCELLATION POLICY: Booking times/days can be changed or cancelled up to 24 hours in advance without penalty—no cancellations within 24 hours of tour times. No shows are charged in FULL. Please check in 20 minutes BEFORE departure time to avoid being considered a NO SHOW. Tickets booked “day of” are non-refundable – you may change the tour time if it is available. No refunds are provided for unused tickets. Once you have booked the tickets, the entire group must be available for the tour. We will not credit back unused seats in advance or on the day of.” In a nutshell, if you book the tickets, plan on taking the tour. If we are not able to book a MINIMUM OF 4 SEATS, the boat will not go out. We will fully refund your payment if a ride must be cancelled due to this minimum.

Please note that the vendor rental office is open 8 am-5 pm daily. Do not leave a voicemail for cancellations.

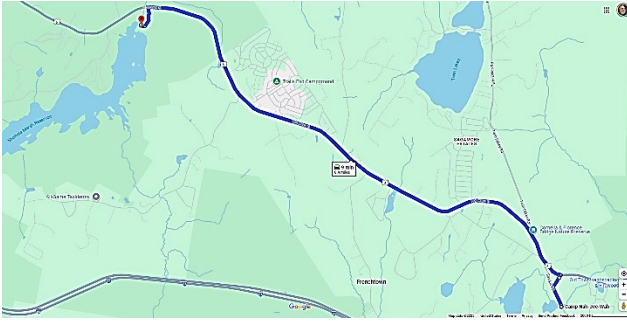
NOTE: MOSAIC [cancellation policy](#) will supersede the vendor's policy

Tickets have been pre-purchased Booking #275181961 under Brian Horowitz / 908-625-4916 / Event@MosaicOutdoor.org





Driving Directions from Camp to Shohola Falls

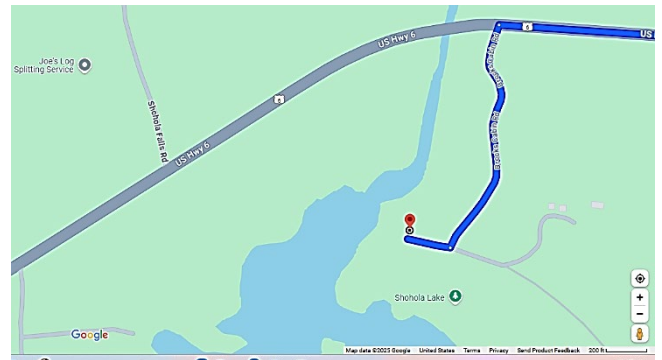


10MIN / 6.3MI

<https://maps.app.goo.gl/nk2KnCK4oknibs7P9>

Start: Camp Nah-Jee-Wah, 570 Sawkill Rd, Milford, PA 18337

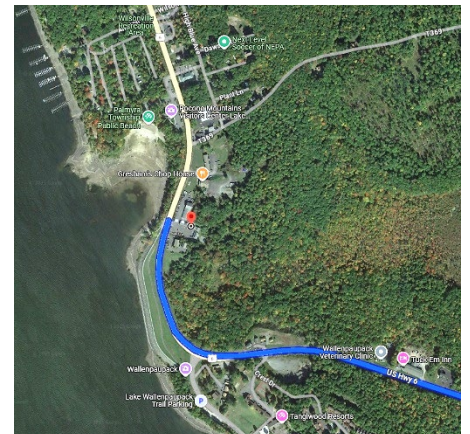
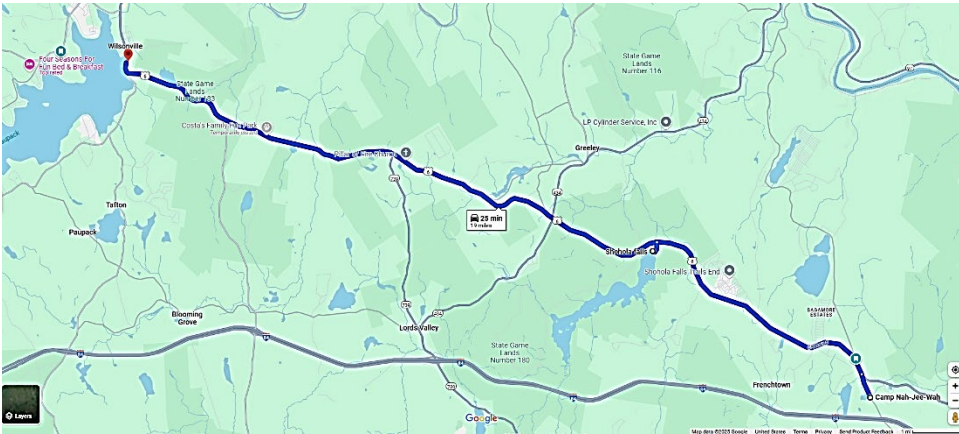
- Head out of the camp driveway and turn left, northwest on Sawkill Rd, and toward Bridge Rd.
 - Then 0.21 miles, 0.21 total miles
- Take the first right onto Bridge Rd.
 - DO NOT TRY TO TURN LEFT ONTO RT. 6 FROM SAWKILL ROAD. This is a hazardous intersection. Using the short detour onto Bridge Rd. is much safer.
 - Then 0.16 miles, 0.37 total miles
- Turn left onto US-6 W.
 - Then 0.00 miles, 0.37 total miles
- Take US-6W past Sawkill Rd. Continue to follow US-6 W.
 - Then 5.74 miles, 6.11 total miles
- Turn left onto Brooks Camp Rd.
 - If you cross over the bridge for Shohola Creek and reach Shohola Falls Road, you have gone about 0.3 miles too far.
 - Then 0.23 miles, 6.34 total miles
- Go 0.2 mile to the end of the road, turn right towards the dam, and fall.
- Park in either the upper or lower lot. The hike starts in the upper lot.



Shohola Falls, near 127 Brooks Cabin Rd, Shohola, PA 18458 ([41.39045, -74.96895](https://www.google.com/maps/place/41.39045,-74.96895))

Directions from Shohola Falls to Wallenpaupack Scenic Boat Tour

<https://maps.app.goo.gl/nk2KnCK4oknibs7P9>



16 Min / 12.7 Miles

START: Shohola Falls, near 127 Brooks Cabin Rd, Shohola, PA 18458 ([41.39045, -74.96895](#))

1. Head back out the way you came back to US-6 W.
 - a. Then 0.3 miles, 0.3 total miles
2. Turn left onto US-6 W.
 - a. Then 12.2 miles, 12.5 total miles
3. At the light, you will arrive at Lake Wallenpaupack. Follow Rt. 6, which bends to the right (SR 507 is to the left).
 - a. Then 0.2 miles, 12.7 total miles
4. Turn right into the East Shore Lodging parking lot at the blinking crosswalk light.
 - a. Your destination is 0.2 miles past the intersection of Route 507
 - b. If you reach Bear Run Rd, you have gone about 0.1 miles too far.
5. End Wallenpaupack Scenic Boat Tour, 2487 US-6, Hawley, PA 18428
 - a. GPS: 41°26'47.9"N 75°10'42.0"W / 41.446631, -75.178336



Wallenpaupack Boat Tours is located near Lake Wallenpaupack Observation Dike at 2487 US-6 in Hawley, Pennsylvania. Parking, ticket purchases & pre-purchased ticket check-in can be made at East Shore Lodging, directly across the street from the Observation Dike at Gresham's Landing.

PLEASE NOTE: Garmin and some GPS devices do not work. Please use Google Maps, enter the Wallenpaupack Scenic Boat Tour, and you will arrive at the vendor location.

